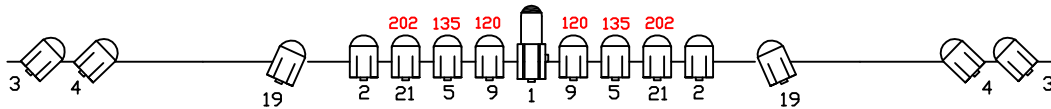
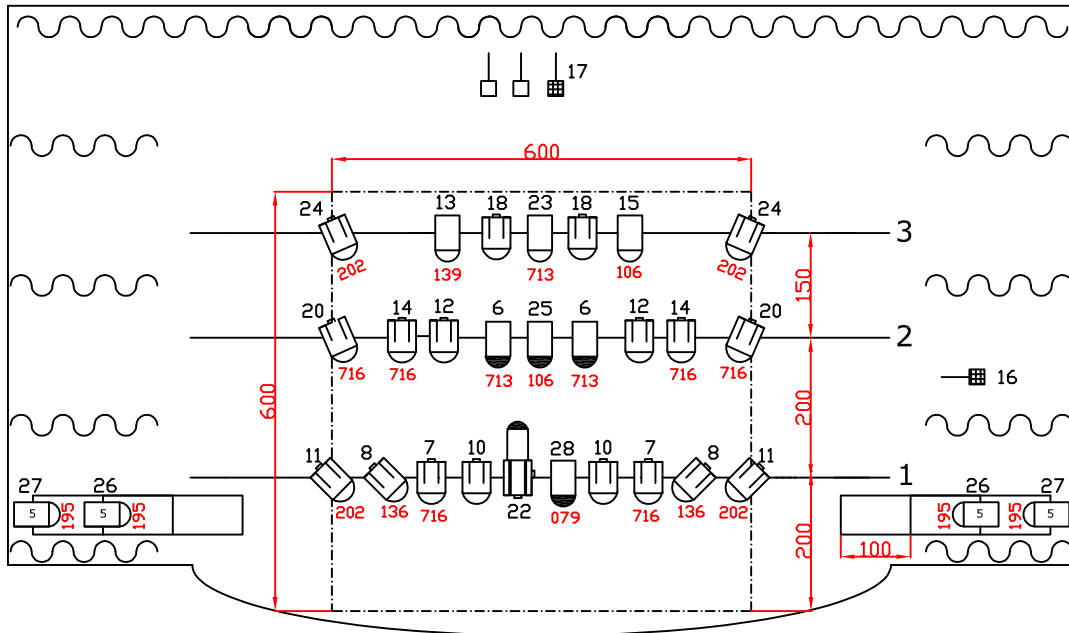


REBUFAPLANETES

CIA PEP BOU



LIGHTING	
4	PAR 64 (cp-62)
3	PAR 64 (cp-60)
4	PAR 64 (cp-61)
32	P.C. 1KW
2	PROFILE 1KW (22/45°)
2	LINIES DIMMER
2	POWER LINIES DIRECTS 220V.
2	SIDE LIGHTING (3mts. height)
----- FITTED CARPET BLACK OR GREY 6x6mts.	
195	GEL

SOUND
- SOUND SYSTEM ENOUGH FOR THE AUDITORIUM (minimum 1000w.)
- 2 SIDEFILDS (behind side masking)
- 1 MIXER (4 channels minimum)
- 1 MINIDISC PLAYER with <u>AUTOPAUSE</u>
- 1 CD PLAYER with <u>AUTOPAUSE</u>

CONTACT:
 TEL. +34 938444555
 MBL. +34 607842899
 pepbou@pepbou.com

REBUFAPLANETES

TECHNICAL SPECIFICATIONS

THEATRE

- It is necessary to have complete darkness without any light coming from the outside
- No draughts (open doors, heating, curtains drawn)
- The atmosphere must be moist

STAGE

- Minimum Dimension: 5m high
 8m wide
 6m to 8m deep
- A black fitted carpet (6 x 6m) is needed
- Adequate black drapes (curtains). Maskings closed
- Stair access from the stage to the stalls (orchestra)
- 1 water supply

DRESSING ROOMS

- Two dressing rooms with running water, showers, coat-hangers, tables and chairs, iron and iron board, mirrors with appropriate lights for make-up, 3 towels, mineral non-fizzy water, beverages and fresh fruits.

SOUND

- Equipment powerful enough for the situation, if necessary (min. 1.000 W) with sound control board with a minimum of 4 entries and 2 out.
- 2 monitors on the stage, behind the first side masking.
- 1 CD (reproducer) with **autopause**.
- 1 Mini disc with **autopause**.

SOUND AND LIGHTING BOARD MUST BE TOGETHER, INSIDE THE CABIN AS WELL AS THE STALLS (ORCHESTRA) AND WILL HAVE TO HAVE A GOOD VIEW OF THE STAGE

LIGHTING

- Lighting board: 1 x 30 programmable channels (company's)

- 32 spotlights (PC) of 1.000 W
- 2 profiles (22°-45°) of 1.000 W
- 3 PAR 64 (CP. 60)
- 4 PAR 64 (CP. 62)
- 4 PAR 64 (CP. 61)
- 2 Power lines direct 220V
- 2 Power lines dimmer
- 2 Side Lighting (3m. height)
- Lighting booms. (see attached drawing)

FILTERS LEE: See attached drawing.

STAFF: LOADING, UNLOADING, SETTING

- Mounting time: 6 hours once the spotlights are placed
- Dismounting time: 1:30 hours
- Personnel: 1 Electrician, 1 Machinist, 2 people for unloading and loading

THE THEATRE STAFF SHOULD INSTALL THE LIGHT AND SOUND EQUIPMENT BEFORE THE COMPANY ARRIVES

PERFORMANCE RUNS APPROXIMATELY 1h 20 minutes